

SMART AIM:
From April 2021 to April 2022,
decrease the time to 1st NNBF
attempt by 1 week from a baseline
of 2 weeks among infants born
<34 weeks

Wee Nuzzle: A Quality Initiative to Promote Non-Nutritive Breast Feeding in Preterm Infants



Correspondence:
Keriann Schulkers Escalante, DO, MPH
kschulkersescalante@health.ucsd.edu
Jennifer Barnard, MD
imbarnard@health.ucsd.edu

Jacobs Medical Center, University of California, San Diego
Keriann Schulkers Escalante & Jennifer Barnard, Erika Clemens, Ruth Hammer, Cindy Ritter,
Jamie Ko, Jacquelyn Wood, Stephanie Freeman, Julie Cooke, Katherine Weiss, Sandra Leibel

UC San Diego
HEALTH SYSTEM

Background of Wee Nuzzle

- Non-nutritive breast feeding (NNBF) is breast/chest feeding after pumping
- Lack of opportunity for direct latching may discourage mothers and reduce breastmilk feeding at discharge

Methods

Eligible:

- Premature infants ≥ 30 weeks (w) on room air or non-invasive respiratory support (NRS) & parent desires to do NNBF

Not eligible:

- Intubated within past week
- Has an umbilical arterial catheter
- Have significant congenital or neurological abnormalities making it unsafe
- Are ≥ 34 w and/or eligible for direct BF

Outcome Measure:

- Time to first NNBF attempt from GA at birth or 30w (whichever is later)

Balancing Measure:

- To ensure that NNBF did not lead to micro-aspirations and an increase in respiratory support (RS), the infants' RS was recorded at time of first NNBF attempt, 24 hours post and 72 hours post

Process Measure:

- Quantify frequency of infants without any documented NNBF attempts despite breastfeeding

PDSA Cycles:

1. **May '21:** Start of QI: Nursing Skills Day education, staff emailed educational materials
2. **July '21:** New template for progress note and rounding discussion
3. **Aug '21:** Added NNBF at 30w to Admission Order Set

Results

- **Outcome Measure:** Decreased time to first NNBF attempt from mean of 13.5 to 5.2 days
- **Balancing Measure:** 1 out of 113 infants had an increase in respiratory support within 72 hours of their first NNBF attempt, from room air to nasal cannula
- **Process Measure:** 0-2 infants per month did not have any documented NNBF attempts despite documented breastfeeding

Conclusion & Next Steps

We have successfully decreased the time to 1st NNBF attempt by >50% among preterm infants. We are planning future PDSA cycles to focus on infants < 30w and to maintain current progress.

Figure 1: Key Driver Diagram

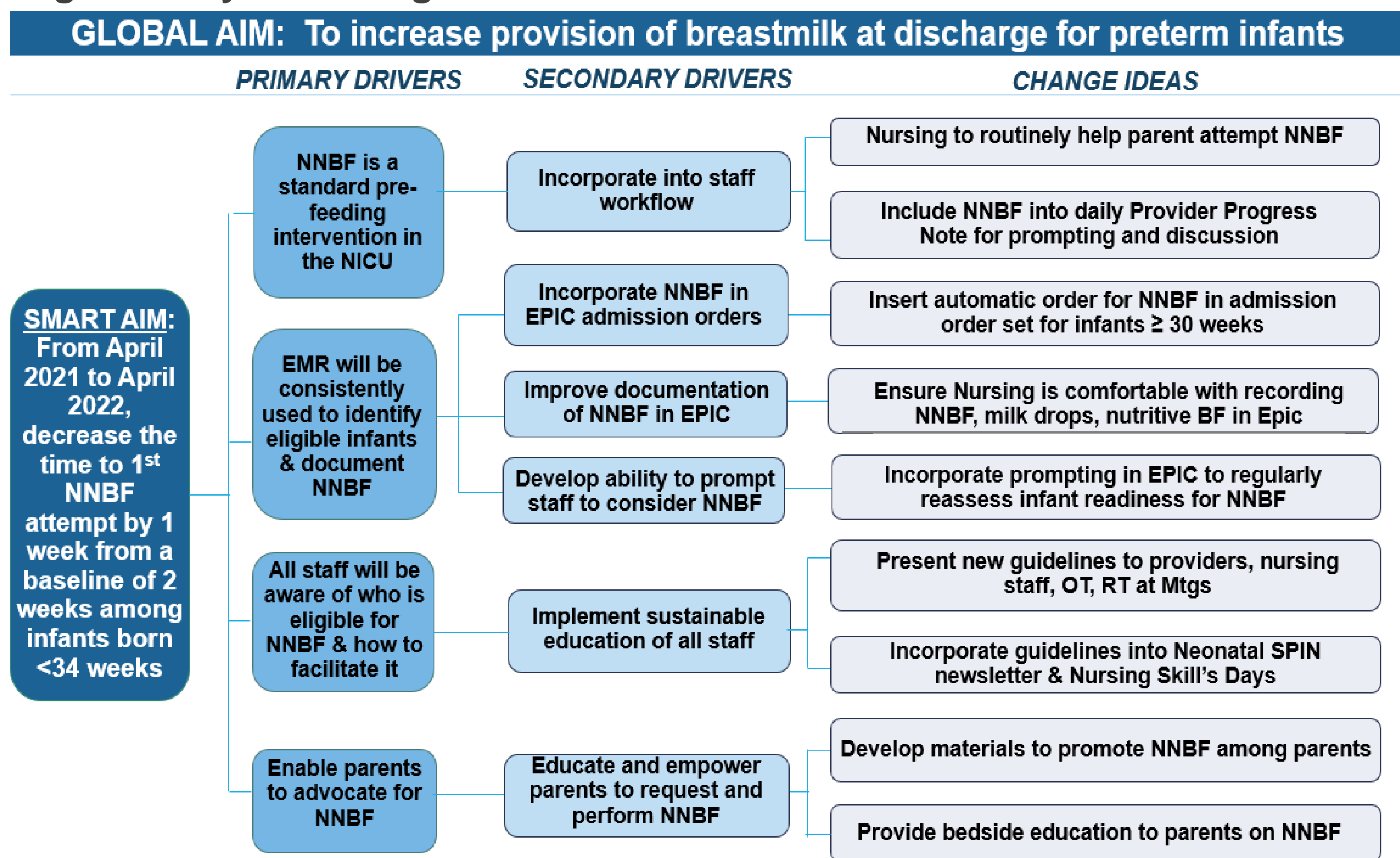


Figure 2: Fishbone Diagram

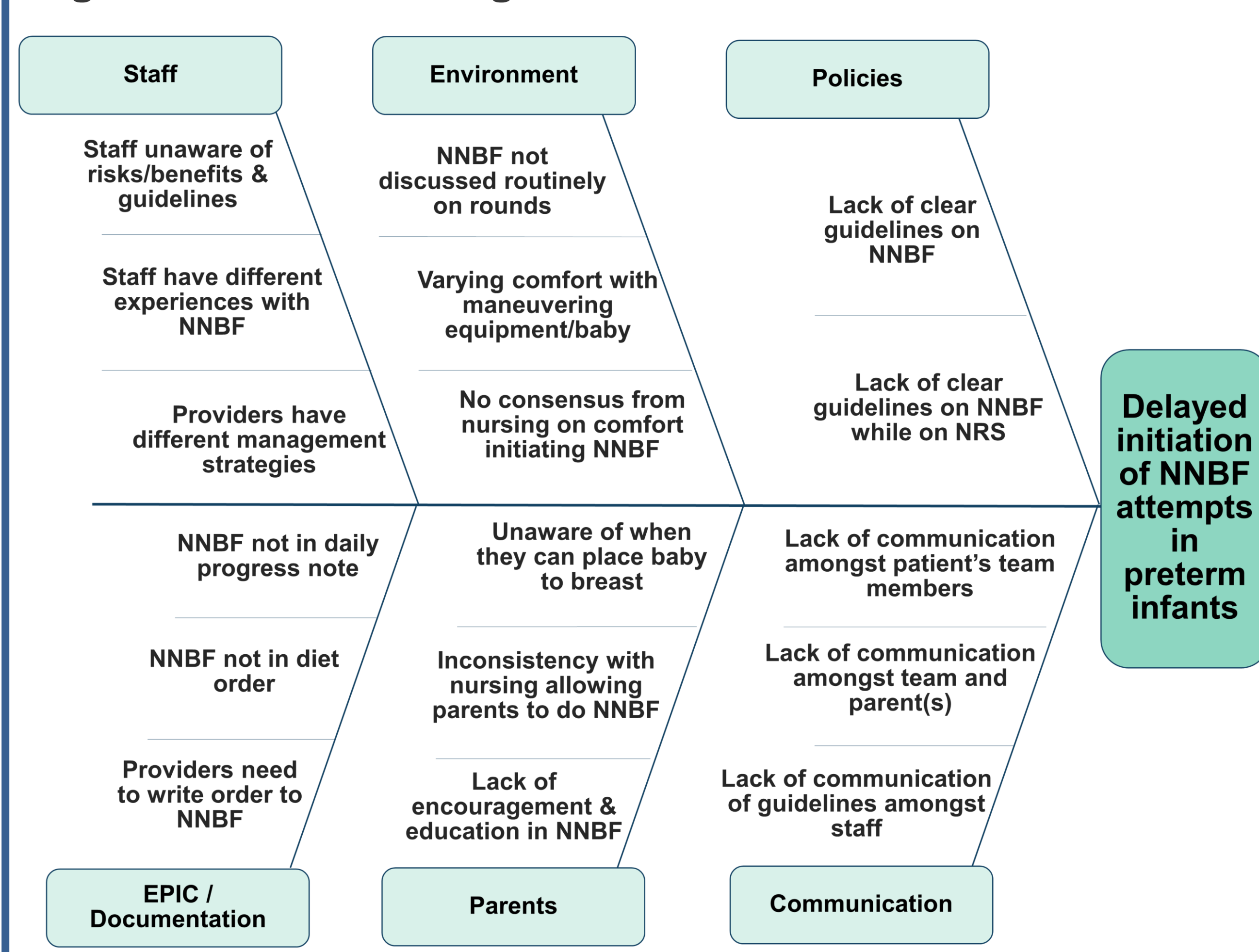
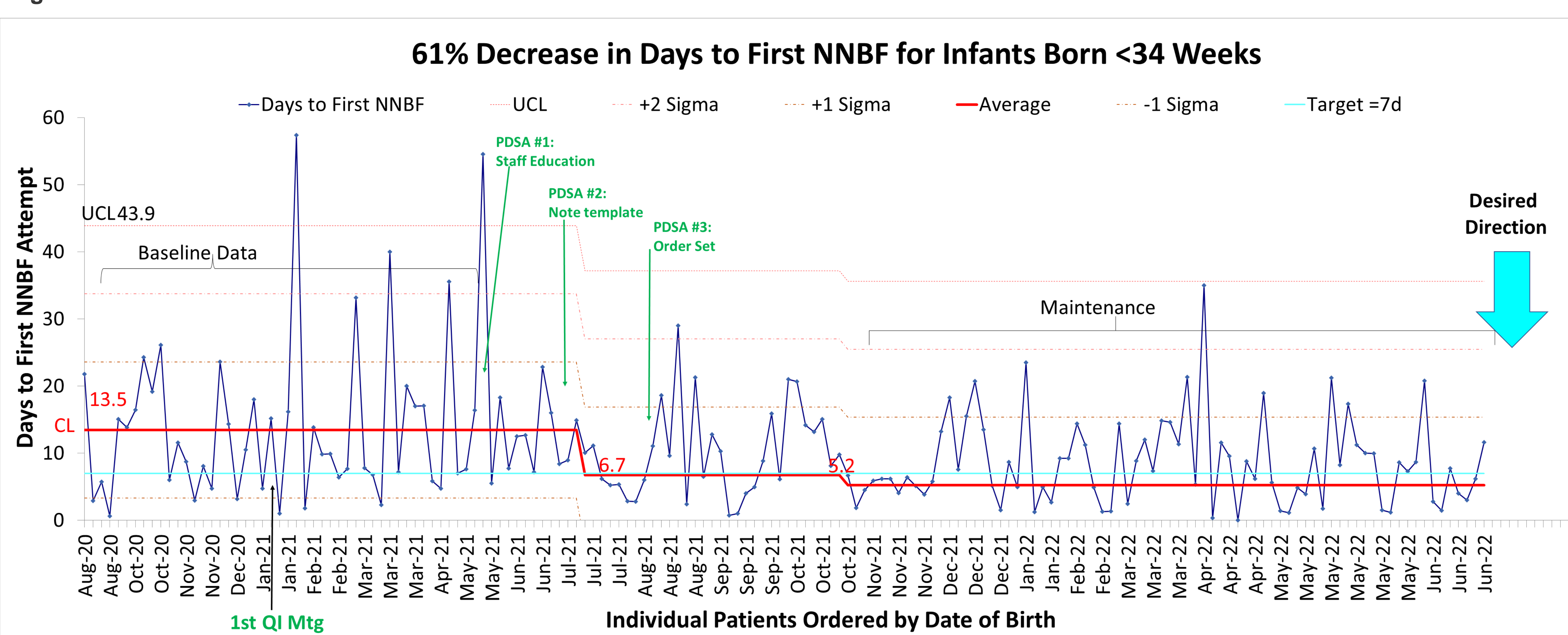


Figure 3: Control Chart



*There are no relevant conflicts of interest to disclose.